

Crossrail moving ahead



Artist's impression of the new Isle of Dogs Crossrail station

Crossrail is proceeding rapidly towards the start of the main programme of construction next year with the announcement that it intends to appoint Transcend as its programme partner.

When completed in 2017, Crossrail will be the biggest addition to the transport network in London and the South East for

50 years, running high-frequency, high-capacity trains underneath the Capital.

Transcend, a joint venture between AECOM, CH2M Hill and Nichols Group, will help Crossrail to safely deliver the overall programme to time, to standard and within budget. The appointment is worth around £100m, and was subject to a competitive tender process.

Mayor of London Boris Johnson said: 'During tough times for our economy it is incredibly satisfying to be able to announce a further step forward for a project that will employ 14,000 people at the peak of construction.'

'I am determined that Londoners from all over our city be able to take advantage of the opportunity to work on this mammoth enterprise.'

Crossrail: What the new network will offer Londoners

Europe's largest construction project will:

- Cut journey times – Heathrow to the West End will take just 30 minutes
- Carry 78,000 passengers per hour in peak times in 10-carriage trains
- Run for 118km from Maidenhead and Heathrow in the west, to Shenfield and Abbey

Wood in the east, through the City, West End and Canary Wharf

- Bring an additional 1.5 million people within 60 minutes commute of key business districts
- Run 24 trains an hour in peak times between Paddington and Whitechapel in both directions

Inside • Cash boost for car clubs • Ride or stride to the Games • Circle line extends to Hammersmith



Road safety in the spotlight

A theatre production will tour 17 London boroughs over the coming months to make young people more aware about road safety.

Set up and funded by Transport for London (TfL), a team from the Immediate Theatre will visit 170 primary schools and put on a play with Year 6 pupils. The production focuses on the children's upcoming journeys to secondary school.

The play, 'Now You See Me;

Now You Don't', is an interactive performance that tells the story of a boy who is knocked down by a car on his way home from school. The students are asked to become detectives and discover how the incident happened.

Fast fact

Last year, 86 per cent of pupils who saw the TfL production said they would behave differently on the roads in future.

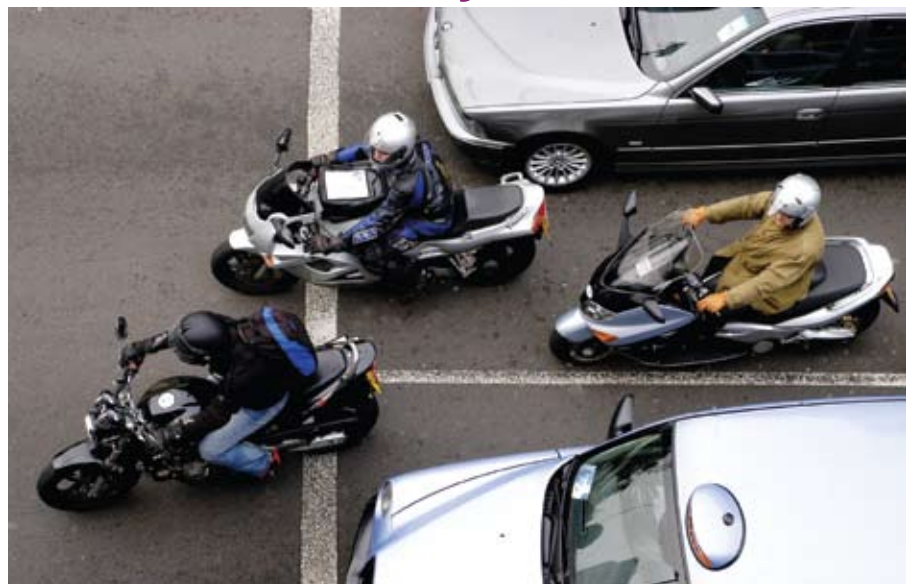
No need for speed

The Capital's first digital speed limit road map has been launched by TfL to help drivers stay within the law and reduce collisions.

The map is available for free download at tfl.gov.uk/isa. It can be integrated on to satellite navigation (SatNav) devices or global positioning systems, where it will display the current speed limit to a driver and alert them if they are going too fast.



Springtime campaign aims to cut motorcycle deaths



As spring arrives, thousands of people will return to commuting by motorcycle. For this reason, TfL has launched a television and radio campaign to help reduce the number of motorcyclists killed or injured in London.

The adverts remind drivers to 'give motorcyclists a second thought' and highlight an optical illusion, known as the 'size-arrival effect', that could cause drivers

to underestimate how much time and space they have available when pulling out in front of an approaching bike.

Chris Lines, Head of the London Road Safety Unit at TfL, said: 'Motorcyclists are among the most vulnerable of London's road users. In 2007, there were 4,856 collisions in greater London involving powered two-wheelers, 944 of these collisions resulted in a death or serious injury.'



Prepare to ride or stride to the Games

The Olympic Delivery Authority has unveiled a new walking and cycling plan, which includes £11.5m of investment to enable 385,000 spectators to 'ride or stride' to the 2012 Games.

The plan proposes two new walking and cycling paths, including a stretch from Finsbury Park to Victoria Park, and Epping Forest to Stratford, with six more significantly improved.



Crackdown on illegal cabs

Operation Helvellyn, a recent drive to tackle taxi touts in central London, resulted in 25 arrests.

The Metropolitan Police and the Cab Enforcement Unit, part of the TfL-funded Transport Operational Command Unit, targeted illegal cabs during the high-visibility operation and also offered travel advice to the public.

Steve Burton, TfL's Director

of Community Safety Enforcement and Policing, said: 'We are determined to crack down on touting, which can be a cover for more serious crimes like robbery or sexual assault. No one should ever take a minicab without a booking – they are illegal, unsafe and uninsured, and it is just not worth the risk. To get home safely, take a black cab or book a minicab through a licensed operator.'

Cash booster for car clubs



TfL has announced a £1m investment package to support the growth of car clubs across London over the next two years. As a result, one third of residents should be just a five minute walk of a car club vehicle.

The funding will be used to identify and install 726 new parking spaces for car club vehicles in 19 boroughs. Mayor Boris Johnson said: 'Car clubs are a fantastic way for Londoners

to cut their motoring costs and help cut carbon dioxide in the Capital. For each car club vehicle on the streets it's estimated that six privately owned cars are taken off the road. That's why we are making this investment.'

Fast fact

Research from Carplus, the national charity promoting responsible car use, shows 52,719 drivers belong to car clubs in London, typically saving members up to £3,500 a year.

Circle line extends to Hammersmith

London Underground (LU) will extend Circle line services to Hammersmith from December 2009.

The changes are part of the LU Investment Programme, which will almost double the frequency of trains between Hammersmith and Edgware Road, as well as increasing the reliability and capacity on the Circle, District, Hammersmith & City and Metropolitan lines.

Tomorrow's leaders have their say

TfL and leadership development organisation, Common Purpose, recently played host to 22 students aged between 13-15 years. The aim of the day was to engage tomorrow's leaders in TfL's Safety and Citizenship Programme.

The young people took part in a mock debate on a transport curfew, and were posed the question: should Zip photocards be stopped after 22:00 for 10 to 15-year-olds, to reduce anti social behaviour and crime?

The students interviewed TfL representatives and gathered evidence from revenue protection, fares and ticketing and bus drivers to better understand what TfL is doing to make people feel safer when travelling.

They also had a tour of TfL's Customer Service departments, followed by a double-decker bus trip to the London Transport Museum, hosted by the Safety and Citizenship team.

At the end of the day, students were encouraged to talk to their peers at school about the issues discussed.



Southfields revamp for 2012 Games

Southfields station is undergoing a refurbishment to improve access to the wider area which includes the All England Lawn Tennis and Croquet Club venue for Wimbledon and the 2012 Games.

Construction is due to begin this summer and finish in late 2010. The station will be refurbished and a lift will be installed for step-free access. There will be a brighter, more open ticket hall, new ticket gates and improved customer information systems.

New-look Tower Gateway opens early

A revamped Tower Gateway station has opened two months ahead of schedule.

DLR has carried out a raft of station improvements that include the construction of a horseshoe-style platform making it easier and faster for passengers to get on and off trains.

The re-opening means that DLR will now operate more trains to and from the new Woolwich Arsenal station. Passengers will also be able to take a direct service from Tower Gateway to Beckton via the ExCeL exhibition and conference centre and the University of East London.

For more information

Further details are available from: Group Government & Stakeholder Relations, Transport for London, Windsor House, 42-50 Victoria Street, London SW1H 0TL. Telephone: 020 7126 4126, email: gsl@tfl.gov.uk

This newsletter is available in pdf format via email. If you would like to help the environment and save paper, contact gsl@tfl.gov.uk to receive an electronic version in future.